

**K.L.N COLLEGE OF ENGINEERING, POTTAPALAYAM - 630 612**

**DEPARTMENT OF ELECTRONICS AND COMMUNICATION ENGINEERING**

**BATCH: 2015 - 2019**

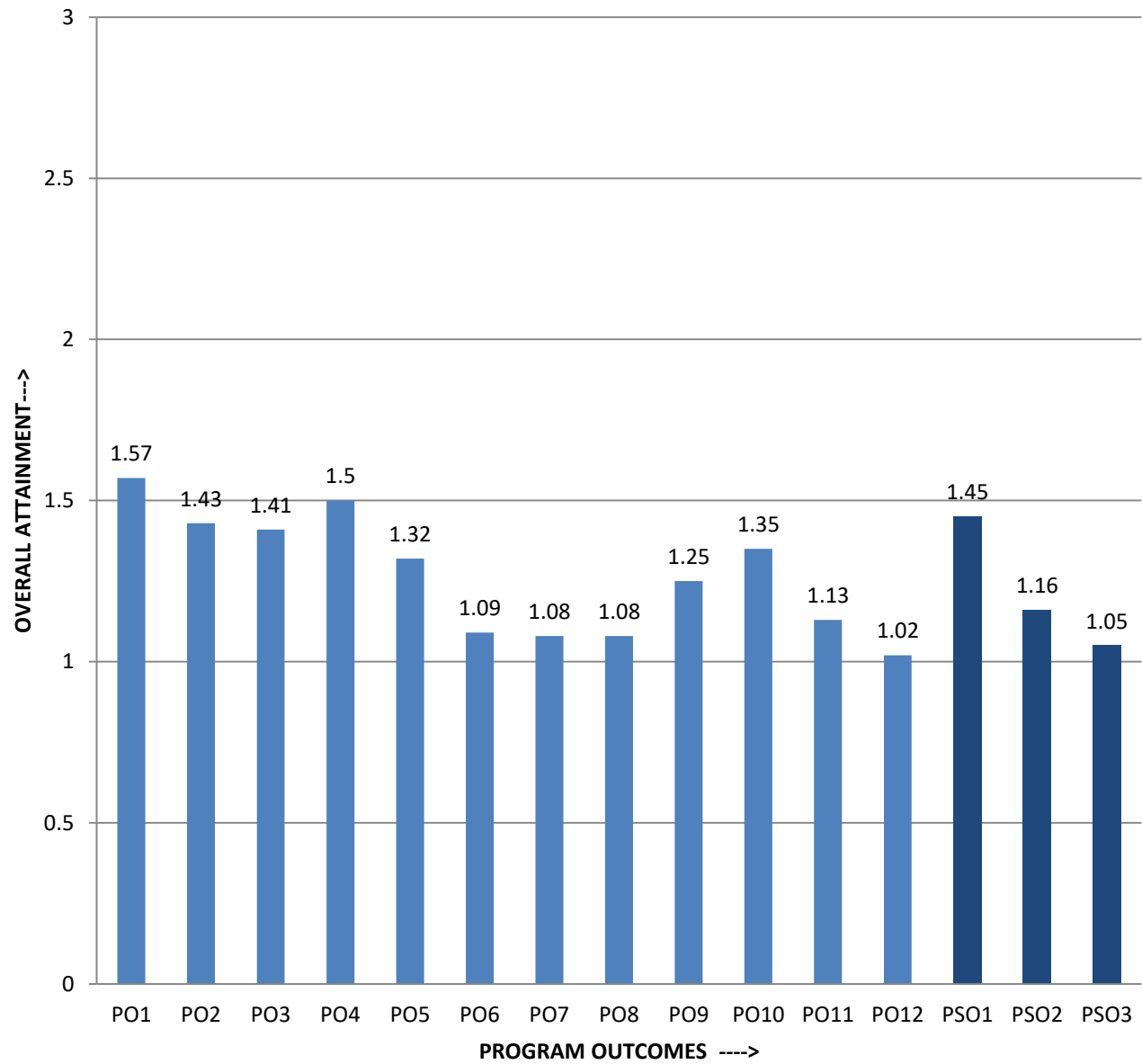
**CONSOLIDATED CO PO CALCULATION**

S.NO	Course Code	Subject Code	Subject Name	Program Outcomes												Program Specific Outcomes		
				PO 1	PO 2	PO 3	PO 4	PO 5	PO 6	PO 7	PO 8	PO 9	PO 10	PO 11	PO 12	PSO 1	PSO 2	PSO 3
1	C101	HS6151	Technical English – I		0.27	0.27	0.27	0.27	0.8	0.54	0.27	0.54	2.41	0.27	0.27	0.27	0.54	0.54
2	C102	MA6151	Mathematics-I	0.73	0.73			0.73							0.37	0.37	0.37	0.37
3	C103	PH6151	Engineering Physics – I	0.5	0.5										0.25	0.25		0.25
4	C104	CY6151	Engineering Chemistry – I	0.92	0.92										0.46	0.46		0.46
5	C105	GE6151	Computer Programming	0.98	0.98			0.33	0.33						0.66	0.66	0.33	0.33
6	C106	GE6152	Engineering Graphics	0.79	1.57			0.79				0.79				0.79	0.79	0.79
7	C107	GE6161	Computer Practices Laboratory	0.68	2.04				0.68			0.68			1.36	0.68	0.68	0.68
8	C108	GE6162	Engineering Practices Laboratory	0.68	0.68	0.68		0.68				0.68			0.68	0.68	0.68	0.68
9	C109	GE6163	Physics and Chemistry Laboratory - I	1.92	0.64		0.64								0.64	1.28		0.64
10	C110	HS6251	Technical English – II		0.76	0.76	0.76	0.76	0.76	1.51	0.76	1.51	2.27	0.76	0.76	0.76	1.51	1.51
11	C111	MA6251	Mathematics-II	0.71			0.71					0.71			0.35	0.35		0.35
12	C112	PH6251	Engineering Physics-II	0.52	0.52										0.26	0.26		0.26
13	C113	CY6251	Engineering Chemistry-II	0.56	0.56										0.28	0.28		0.28
14	C114	EC6201	Electronic Devices	0.98	0.66	0.66	0.33		0.66	0.33	0.33				0.33	0.66	0.33	0.33
15	C115	EE6201	Circuit Theory	0.98	0.66	0.33	0.33	0.33								0.66	0.33	
16	C116	GE6262	Physics and Chemistry Laboratory-II	2.04	0.68											0.68		
17	C117	EC6211	Circuits and Devices Laboratory	2.04	1.36	1.36	1.36			0.68	0.68	1.36	0.68		0.68	2.04	0.68	0.68
18	C201	MA6351	Transforms and Partial Differential Equations	1.01	1.01		0.67									0.67		
19	C202	EE6352	Electrical Engineering and Instrumentation	0.28	0.83				0.55	0.55					0.28	0.28	0.55	0.28
20	C203	EC6301	Object Oriented Programming and Data Structures	1.02	0.68	0.68	1.02		0.34	0.34	0.34					1.02	0.34	0.34
21	C204	EC6302	Digital Electronics	1.07	0.72	0.72	1.07	0.36	0.36	0.36	0.36			0.36		1.07	0.36	0.36

22	C205	EC6303	Signals and Systems	1.01	0.67	0.67	0.67	1.01	0.34	0.34	0.34	0.67		0.34	0.34	1.01	0.67	0.34
23	C206	EC6304	Electronic Circuits – I	0.89	0.6	0.6	0.89	0.6	0.3	0.6	0.3	0.3		0.3	0.3	0.89	0.6	0.3
24	C207	EC6311	Analog and Digital Circuits Laboratory	1.82	1.21	1.21	1.82	0.61	0.61	1.21	0.61	1.21		1.21		1.82	1.21	0.61
25	C208	EC6312	OOPS and Data Structures Laboratory	2.49	1.66	1.66	2.49		0.83	0.83	0.83	0.83	0.83			2.49	0.83	0.83
26	C209	MA6451	Probability and Random Processes	1.04	1.04	1.04										1.04		
27	C210	EC6401	Electronic Circuits – II	1.88	1.25	1.25	1.88	1.25	0.63	0.63	0.63	0.63	0.63	0.63	0.63	1.88	1.25	0.63
28	C211	EC6402	Communication Theory	1.53	1.53	1.53	1.02		0.51	0.51	1.02	0.51			0.51	1.53	0.51	0.51
29	C212	EC6403	Electromagnetic Fields	1.15	1.15	0.38			0.38	0.38	0.38	0.77				0.77	0.38	0.38
30	C213	EC6404	Linear Integrated Circuits	2.49	1.66	1.66	2.49		0.83	0.83	0.83	0.83	0.83			2.49	0.83	0.83
31	C214	EC6405	Control System Engineering	1.58	1.58	1.05		1.05	0.53	0.53	1.05	1.05				1.05	1.05	0.53
32	C215	EC6411	Circuit and Simulation Integrated Laboratory	2.2	2.2	1.47	2.2	1.47	0.73	1.47	0.73	0.73		0.73	0.73	2.2	1.47	0.73
33	C216	EC6412	Linear Integrated Circuits Laboratory	1.32	0.88	1.32	1.32	0.88	0.44	0.44	0.44	0.44		0.44	0.44	1.32	0.88	0.44
34	C217	EE6461	Electrical Engineering and Control System Laboratory	1.5	1.5	1.5	2.25	0.75				0.75				2.25	0.75	0.75
35	C301	EC6501	Digital ommunication	1.04	1.04	1.04	1.04	0.35	0.35	0.35	0.69	0.35			0.35	1.04	0.35	0.35
36	C302	EC6502	Principle of Digital Signal Processing	1.06	1.06	0.71	0.35		0.35	0.35	0.35	0.35		0.35	0.71	1.06	0.35	0.35
37	C303	EC6503	Transmission Lines and Wave Guides	1.14	0.76	0.76	0.76		0.38	0.38	0.38	0.38				1.14	0.38	0.38
38	C304	GE6351	Environmental Science and Engineering	0.72	0.72	0.36	0.36		0.72	0.72	0.72	0.36		0.72	0.72	0.72	0.72	0.72
39	C305	EC6504	Microprocessor and Microcontroller	1.07	0.72	0.72	1.07	1.07	0.72	0.72	0.36	0.36			0.72	1.07	1.07	0.36
40	C306	EC6511	Digital Signal Processing Laboratory	2.04	1.36	2.04	2.04	2.04	0.68	0.68	0.68	0.68		1.36	0.68	2.04	1.36	0.68
41	C307	EC6512	Communication Systems Laboratory	2.04	2.04	2.04	2.04	1.36	0.68	0.68	1.36	1.36			0.68	2.04	1.36	0.68
42	C308	EC6513	Microprocessor and Microcontroller Laboratory	2.55	2.55	1.7	2.55	2.55	0.85	0.85	0.85	1.7		0.85	0.85	2.55	1.7	0.85
43	C309	MG6851	Principles of Management	0.34	0.34	0.68	0.34	0.34	0.68	0.68	1.02	0.68	0.68	1.02	0.34	0.68	0.68	1.02
44	C310	CS6303	Computer Architecture	0.34	0.34	0.68			0.68	0.34	0.34				0.34	0.34	0.34	
45	C311	CS6551	Computer Networks	0.34	0.68	1.02	0.68	0.68	0.34	0.34	0.34				0.34	0.68	0.34	

46	C312	EC6601	VLSI Design	1.1	1.1	1.1	1.1	1.1	0.73	0.37	0.37		0.37	0.37	0.37	1.1	0.73	0.37
47	C313	EC6602	Antenna and Wave Propagation	1	1	0.33	1	1	0.33	0.33	0.33				0.33	0.66	0.66	
48	C3E1	EC6001	Medical Electronics	1.02	0.34	0.68			0.68	0.34	0.34				0.34	0.68	0.34	
49	C3E2	EC6002	Advanced Digital Signal Processing	0.93	0.62	0.93	0.62	0.62	0.31	0.31	0.31			0.31	0.31	0.93	0.31	0.31
50	C315	EC6611	Computer Networks Laboratory	1.74	1.74	2.62	2.62	2.62	0.87	0.87	0.87	1.74	0.87		0.87	2.62	1.74	0.87
51	C316	EC6612	VLSI Design Laboratory	2.04	2.04	2.04	2.04	2.04	0.68	0.68	0.68	1.36	0.68	0.68	0.68	2.04	1.36	0.68
52	C317	GE6674	Communication and soft Skills Laboratory							0.68	0.68	1.36	2.04	2.04	0.68		0.68	1.36
53	C401	EC6701	RF and Microwave Engineering	1.05	0.7	0.35	0.7	0.35	0.35	0.35				0.35		0.7	0.35	
54	C402	EC6702	Optical ommunication and Networks	1.06	0.35	1.06	0.71	0.71	0.71	0.35	0.35	0.35		0.35	0.35	0.71	0.35	0.35
55	C403	EC6703	Embedded and Real Time Systems	0.73	0.73	1.1	0.73	0.37	0.37	0.73	0.37		0.37	0.37	0.73	0.73	0.37	0.37
56	C4E1	IT6005	Digital Image Processing	0.73	1.1	0.73	0	0	0.73	0.37	0.37	0.37	0	0.37	0.37	0.73	0.37	0.37
57	C4E2	EC6009	Advanced Computer Architecture	0.78	0.78	0.39			0.78	0.39	0.39				0.39	0.39	0.39	
58	C4E16	EC6015	Radar and Navigational Aids	1.18	0.78	0.39	0.78	0.39								0.78		
59	C407	EC6711	Embedded Laboratory	2.04	2.04	0.68	1.36		1.36	0.68	0.68		0.68	0.68	0.68	1.36	0.68	0.68
60	C408	EC6712	Optical and Microwave Laboratory	2.36	1.57	0.79	1.57		0.79	0.79	0.79	1.57	0.79	0.79		1.57	0.79	0.79
61	C409	EC6801	Wireless Communication	1.02	1.02	1.02	0.34	0.34		0.34		0.34		0.34	0.34	0.68	0.34	0.34
62	C410	EC6802	Wireless Networks	1.44	1.44	1.44	0.96	0.48	0.48	0.48		0.48	0.48	0.48	0.48	1.44	0.48	0.48
63	C4E4	GE6075	Professional Ethics in Engineering	0.34	0.34	1.02	0.34		1.02	1.02	1.02		1.02		0.34	0.68	0.68	0.34
64	C4E5	GE6757	Total Quality Management	0.34	0.34	0.68	0.34		0.34	0.34	0.34	0.34	0.34		0.34	0.34	0.34	0.34
65	C4P1	EC6811	Project Work	1.96	1.96	1.96	1.96	1.96	1.31	1.31	1.31	1.96	1.96	1.31	1.31	1.96	1.31	1.31
<b>ACTUAL</b>				62	63	51	46	37	47	48	43	38	15	28	49	64	56	60
<b>OBTAINED</b>				74.87	65.3	51.84	52.59	32.21	28.87	28.88	26.18	31.08	17.92	17.76	25.2	68.37	38.84	30.33
<b>DIRECT ATTAINMENT(DA)</b>				1.21	1.04	1.02	1.12	0.89	0.61	0.6	0.59	0.82	0.94	0.66	0.52	1.07	0.71	0.56
<b>INDIRECT ATTAINMENT (IA)</b>				3	3	3	3	3	3	3	3	3	3	3	3	3	3	3
<b>OVERALL ATTAINMENT (0.8*DA+0.2*IA)</b>				1.57	1.43	1.41	1.5	1.32	1.09	1.08	1.08	1.25	1.35	1.13	1.02	1.45	1.16	1.05

## PO,PSO Attainment 2015-19 Batch



## CO Attainment 2015-19 Batch

